



eHealth® E2E Console™

The foundation component of the eHealth Suite that delivers performance reporting and predictive analysis for networks, systems, applications and services.

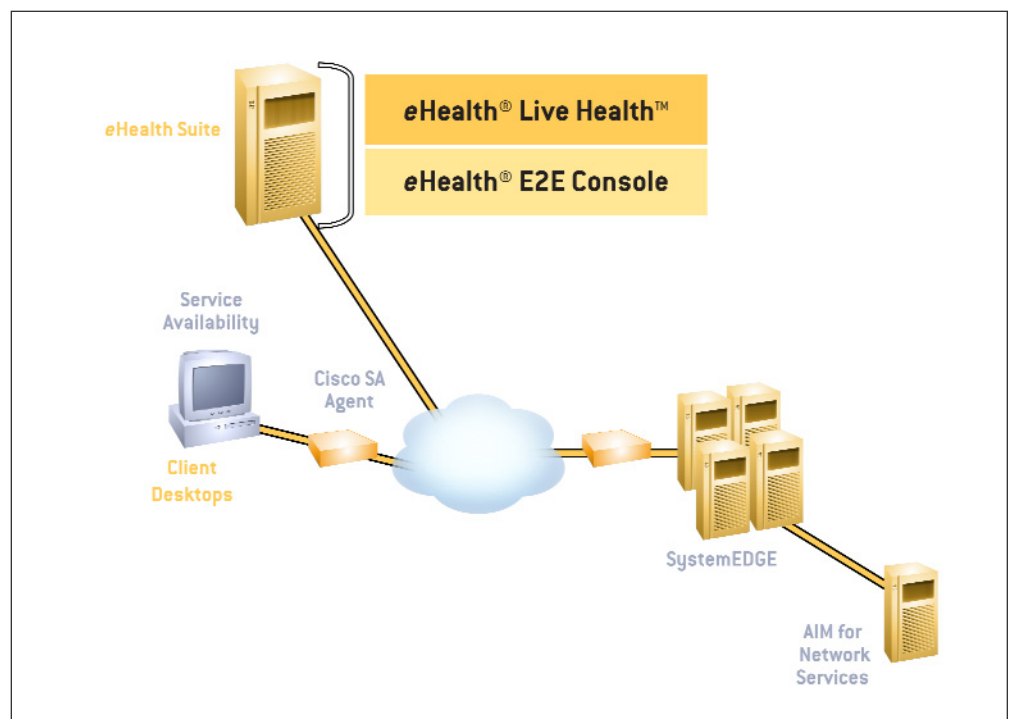
Product Benefits

- Manage your end-to-end business computing infrastructure with a single solution
- Plan your just-in-time infrastructure with informed capacity planning
- Document compliance to contracted service levels with robust SLA reporting
- Lower Mean Time to Repair (MTTR) with on-demand trend analysis
- Identify future problem areas with predictive analysis and reporting
- Customize reporting views to map to the way you conduct business

Comprehensive Analysis and Reporting

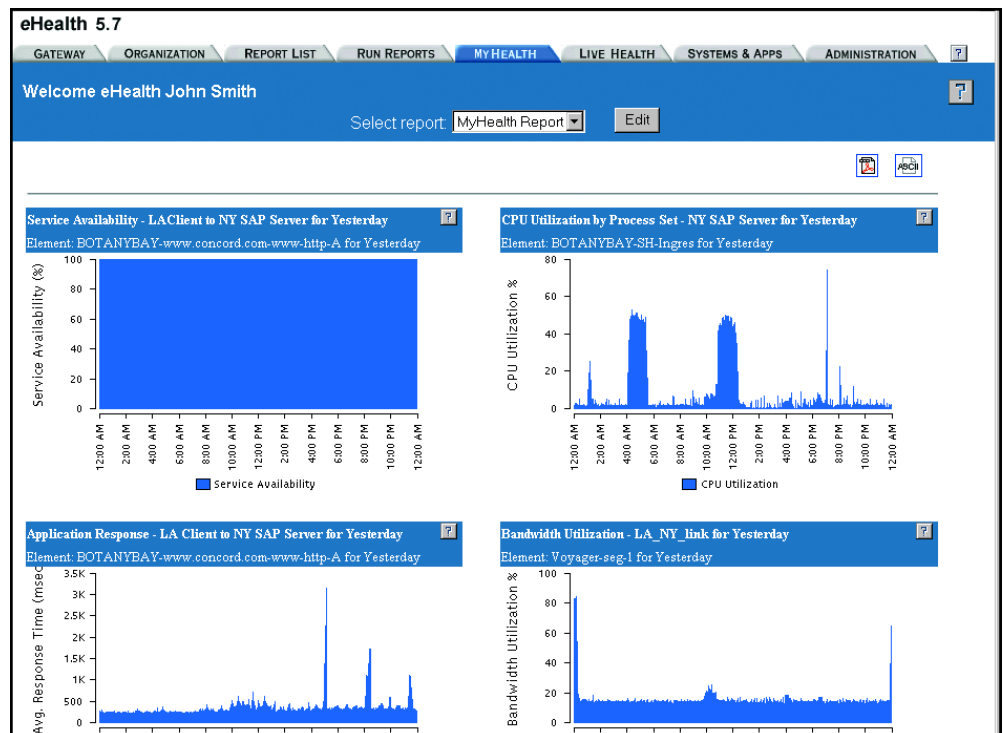
Integrated, End-to-End Management

The eHealth® E2E Console collects and analyzes data from all the areas of your business infrastructure. The eHealth E2E Console serves as a foundation for your management strategy by integrating real-time fault management within the context of historical performance. This enables you to quickly identify, detect, and correct problems before end-user service quality is jeopardized.



Long-Term Trending and Analysis

The eHealth Suite delivers long-term trend analysis across the Internet infrastructure. Users can leverage Trend reports to uncover dangerous resource utilization patterns over time (anywhere from a week to a year or longer). Armed with this information, users can speed problem identification and lower Mean Time to Repair (MTTR). In addition, Top N analysis identifies network elements that are in breach of user-defined criteria. You can leverage Top N reports as your "To Do List" of problems to investigate, long before outages impact business productivity and bottom line revenue. For example, your system administrators can run Top N reports that identify systems running at less than peak efficiency by showing all systems that have availability less than 99.0%, CPU utilization greater than 70%, and memory utilization greater than 75%.



Customizable Reporting

The eHealth® Suite reports are fully customizable to meet the needs of the world's largest enterprises, service providers, and telecommunications providers. The MyHealth report environment enables users to assemble customized views that show precisely the information needed. For example, a business unit manager could assemble a view of his SAP application that shows network, system, and application performance alongside a view of end user response time. Once you create your MyHealth view, it updates dynamically so you always see the current state of your world.

The eHealth Suite Integrates Fault and Performance Management

The eHealth E2E Console integrates with CA's Live Health™ application (available separately) to deliver real-time fault management with integrated historical reporting. Intelligent analysis and out-of-the-box profiles accurately pinpoint faults, delays, and potential outages, reducing Mean Time To Repair (MTTR), reducing operations costs, and driving increased revenue.

Technical Specifications for eHealth 5.7 English Standalone
eHealth® E2E Console required.

Minimum System Requirements
UNIX

Workstation

- Sun SPARCstation or UltraSPARC
- HP-9000 Series

Operating Systems

- Solaris 8, 9 (32 and 64-bit)
- HP-UX 11.i (64-bit)

Windows Manager

- OpenWindows, OSF/Motif, CDE

Memory

- 2 GB

Free Disk Space

- 3.5 GB—eHealth and apps
 - Oracle - 2400 MB
 - eHealth 5.6 - 1200 MB
- 2.5 GB—Minimum Database Size
- 1.5 GB—System swap space

Web Browser

- Mozilla 1.6 (or higher)

Minimum System Requirements

Windows

Workstation

- Intel Pentium III processor, 1 GHz (or higher) or equivalent

Operating Systems

- Windows 2000: Professional Server, Advanced Server/Windows 2003: Standard, Enterprise

Memory

- 2 GB

Free Disk Space

(NTFS Format)

- 2.6 GB—eHealth files and apps
 - Oracle - 2400 MB
 - eHealth 5.6 - 835 MB
 - NutC - 80 MB
 - Acrobat - 12 MB
- 2.5 GB—Minimum Database
- 1.5 GB—System swap space

Web Browser

- Netscape Communicator 7.0 (or higher)
- Internet Explorer 6 (or higher)
- Mozilla 1.6 (or higher)

The eHealth E2E Console integrates actual end-user response information from eHealth® Application Response with information about networks and systems for a holistic view of how the infrastructure is performing from the user perspective. This view results in improvements to customer service, optimization of the IT infrastructure, productivity gains for end-users and the IT staff, and the ability to set application SLAs.

The eHealth E2E Console includes real-time views into the health of critical systems and applications right from your Web browser. By integrating real-time content with historical performance, users gain a natural workflow for identifying and resolving problems that might otherwise bring down critical systems and applications.

Expansive Coverage of Critical Networking Technologies

The eHealth E2E Console supports network and system technologies, infrastructure applications, and response time monitoring capabilities. The eHealth Suite also analyzes and reports on non-SNMP devices through optional Data Integration Modules.

The eHealth® Suite Philosophy

The eHealth® Suite was designed to mask the complexity of managing large, heterogeneous computing environments spanning networks, systems, and applications. The eHealth Suite

Network Technologies

LANs, WANs, Wireless LANs
Routers, Switches
ATM
Frame Relay and End-to-End PVC's
Remote Access Servers (RAS)
Broadband: Cable, DSL
Voice Over IP (VoIP)
Storage Area Networks (SAN)
Devices
IP Quality of Service (QoS)

Systems and Applications

Windows and UNIX workstations and servers (via eHealth SystemEDGE or third party certified agents)
Applications (via eHealth application insight modules)

- Email
- Web Servers
- Databases
- Network Services

Response

True end-user experience (via Application Response Agents)
Server-based, synthetic testing for availability and response (via Service Availability Agents)
Router-based, synthetic testing for availability and response (via Cisco Service Assurance Agents)

offers rapid deployment, the ability to easily map the infrastructure to your business processes, a rapid return on investment, and vendor neutral support for numerous devices. Auto-discovery and ease of deployment ensure that you can begin generating reports in a single day, versus months or longer for other tools. An embedded database handles all database functions without the need for an expensive database administrator. This translates to a rapid return on investment.

