



# Network OneClick

SPECTRUM® ensures actionable information is never more than one click away.

## Features

- Role-based web interface
- Comprehensive topology maps
- Full suite of troubleshooting tools including Ping, SSH, Telnet and Traceroute, with the ability to add others
- Management security

## Advantages

- Informative
- Easy-to-use
- Adaptive and flexible
- Cost-effective

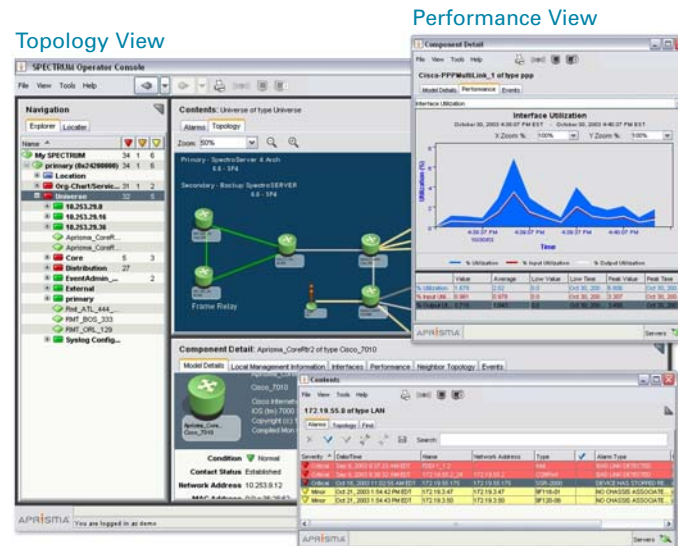
## Benefits

- Anywhere, anytime access
- Control of who sees what information
- Ease of use expands audience for actionable information
- Reduced training and administration costs
- Secure communications

## Overview

The Network OneClick user interface architecture makes it easy and cost effective for enterprises and service providers to expand the audience for actionable information. OneClick is a three-tier, web-based architecture. The central component is a web server that connects directly to Network Fault Management servers and delivers this information out to distributed Java clients. The feature-rich Java clients are automatically downloaded, installed and updated from the OneClick web server to ease implementation, administration and maintenance. The OneClick architecture combines anywhere, anytime access and reduces the training requirements of standard web-based applications with the scalability and responsiveness of a full desktop client application.

The Network OneClick architecture offers contextual workflow, security, scalability and direct display of key details, while lowering administrative costs. The Network OneClick Console focuses on the needs of operators and troubleshooters. What this means to you is that the right information is delivered to the right people at the right time. A Fortune 1000 company gave OneClick to a team of brand new IT operations staff, and within minutes they were finding and fixing problems.



Alarm List

For more information,  
call 1-800-225-5224  
or visit [ca.com](http://ca.com)